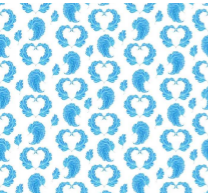




THE CLIMATE CHRONICLES: UNRAVELING THE ENIGMA OF GLOBAL CLIMATE CHANGE



THE CLIMATE CHRONICLES

Welcome to the **enigmatic** world of global climate change. Join us as we unravel the mysteries and explore the impact of *changing weather patterns* on our planet.

UNDERSTANDING CLIMATE CHANGE

Delve into the complex web of **natural phenomena** and human activities that contribute to climate change. Gain insights into the interconnectedness of the *atmosphere, oceans, and land*.





THE CARBON CONUNDRUM

Uncover the role of carbon emissions in driving climate change. Explore the impact of *fossil fuel combustion* and *deforestation* on the delicate balance of our planet.

MELTING ICE CAPS

Witness the dramatic effects of **melting ice caps** on global sea levels and ecosystems. Discover the far-reaching consequences for *polar wildlife* and *coastal communities*.



EXTREME WEATHER EVENTS

Experience the intensifying impact of extreme weather events on human societies and natural habitats. Learn about the increasing frequency of *hurricanes, droughts, and floods.*



OCEAN ACIDIFICATION

Dive into the alarming phenomenon of ocean acidification and its repercussions for marine life. Explore the effects on *coral reefs*, *fish populations*, and *coastal economies*.



**SPECIES EXTINCTION
AND BIODIVERSITY
LOSS DUE TO HABITAT
LOSS**



**RANGE OF
TOLERANCE**



RENEWABLE SOLUTIONS

Embrace the potential of renewable energy as a sustainable solution to combat climate change. Discover the advancements in *solar*, *wind*, and *hydroelectric power*.

GREEN INNOVATIONS

Celebrate the ingenuity of green innovations in mitigating climate change. Explore the revolutionary technologies in *carbon capture*, *sustainable agriculture*, and *green transportation*.





GLOBAL COLLABORATION

Unite in the collective effort to address climate change through global collaboration and cooperation. Witness the impact of *international agreements* and *cross-border initiatives*.

KEY INTERNATIONAL AGREEMENTS

Rio De Janeiro 1992 - stabilizing green house gas concentration

Kyoto Protocol - 1997 - emission reduction target for developed countries

Paris agreement COP21 - limit global warming 2 degree C (governments agreed to keep the increase in global average temperature to well below 2°C above pre-industrial levels and to pursue efforts to limit it to 1.5°C.)

COP 28 starts today



EMPOWERING COMMUNITIES

Empower communities to adapt and thrive in the face of climate change.

Explore the resilience of *indigenous peoples, local initiatives, and sustainable development*.





YOUTH ACTIVISM

Inspire by the passionate activism of youth movements advocating for climate action. Witness the impact of *youth-led protests, environmental education, and innovative campaigns.*

CALL TO CLIMATE ACTION

Answer the urgent call to action to address climate change. Explore the role of individual choices, policy advocacy, and collective responsibility in shaping a sustainable future.





SUSTAINABLE LIFESTYLES

Embrace the shift towards sustainable lifestyles as a pivotal solution to climate change. Discover the impact of conscious consumption, renewable practices, and environmental stewardship.



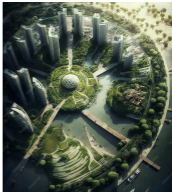
INNOVATIVE ADAPTATION

Explore the innovative strategies for adapting to climate change. Witness the resilience of *urban planning*, *ecosystem restoration*, and *disaster preparedness*.

Resistance and resilience

THE FUTURE LANDSCAPE

Envision the future landscape shaped by climate change. Explore the prospects for *renewable cities, sustainable industries, and resilient ecosystems.*





EMPOWERING HOPE

Empower hope for a sustainable future amidst the challenges of climate change. Celebrate the resilience of nature, innovation, and collective action.

CONCLUSION

Reflect on the journey of unraveling the enigma of global climate change. Embrace the imperative for *action*, *innovation*, and *unity* in shaping a sustainable future.

**HOW CAN WE COLLABORATIVELY ADDRESS
THE UNIQUE CLIMATE CHALLENGES FACED
BY MEGHALAYA, CONSIDERING THEIR
DIVERSE ECOSYSTEMS AND
VULNERABILITIES?**

**WHAT POLICY MEASURES CAN BE TAKEN
AT THE STATE LEVEL TO PROMOTE
SUSTAINABLE PRACTICES AND MITIGATE
THE IMPACT OF CLIMATE CHANGE IN
THE REGION**

**HOW CAN WE INTEGRATE TRADITIONAL
KNOWLEDGE AND PRACTICES INTO
CLIMATE CHANGE ADAPTATION AND
MITIGATION STRATEGIES**